

USING YOUR PURPLE PLUS IN THE LIBRARY



LOGGING IN OFF CAMPUS

Want to access the library's resources, but you aren't on campus? Fear not, as you can access all the databases via our library website! You just need your name and the barcode number from your Purple Plus.

THIS IS YOUR BARCODE NUMBER

OHIOLINK

OhioLINK is one of the features that the library uses to give you access to millions of resources across more than 115 universities in Ohio!



ACCESSING MY ACCOUNT

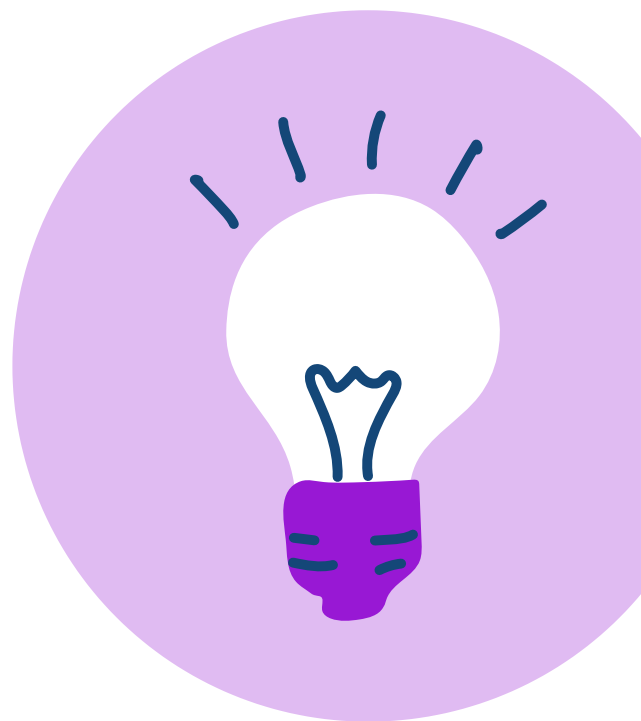
You can access your library account by following these short steps:

1. Go to <https://www.mountunion.edu/library>
2. On the right hand side, click on "My Account/Renewals" (under Quick Links)
3. Sign in with your last name and Purple Plus barcode number!

OTHER USES

Your Purple Plus does a lot of other things as well! For more information about other uses, click on the link below!

<https://www.mountunion.edu/purple-plus-card>



IF YOU NEED FURTHER ASSISTANCE, REACH OUT TO OUR LIBRARIANS!

MOST OF THE TIME WE CAN FIX THE PROBLEM IN UNDER 10 MINUTES :)



(330) 257-5742
TEXT OR CALL



REFERENCEDESK@MOUNTUNION.EDU

WHEN CHECKING OUT ITEMS IN PERSON, YOU MUST HAVE YOUR PURPLE PLUS WITH YOU!